

ATLAS

TRTL-30X6



THE AFFORDABLE HIGH S



Atlas Safe Company, with the approval of Underwriters Laboratories, is proud to introduce a new generation of jewelry store quality safes. At last, there is an affordable TRTL-30X6 that combines strength with beauty.

SMOKE EMITTING MATERIAL:

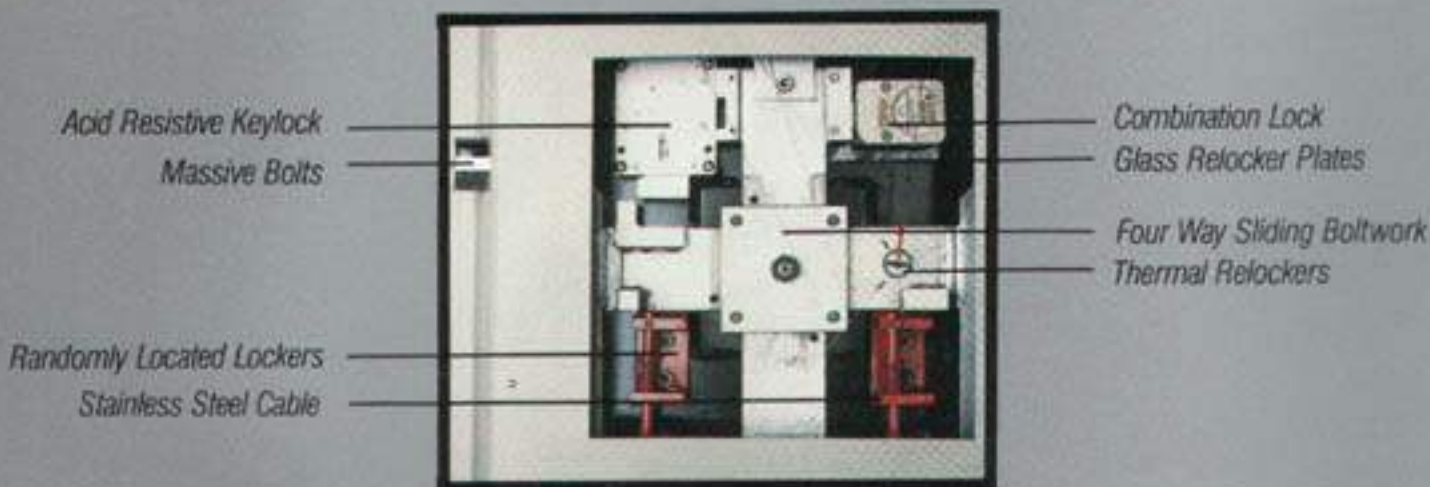
Incorporated in the six sided protection is a material called koalite. When attacked by a torch, this material will trigger the emission of an enormous amount of smoke and fumes creating an extremely hazardous environment. In addition to discouraging the attacker it can also set off smoke alarms and possibly be visible from the street.



TORCH AND DRILL PROTECTION:

The Atlas TRTL-30X6 door and body feature a revolutionary new torch resistant material known as Alusey. Used in conjunction with copper it has time and again demonstrated its ability to withstand torch attack. In independent testing and at Underwriters Laboratories it has been established that the addition of aluminum oxide nuggets in a monolith of super thermosy makes the safe extremely drill resistive.

SECURITY JEWELERS SAFE



ACID RESISTIVE KEYLOCK:

Independent of the combination lock is the Swedish convair keylock. This double bit-
ted, nine lever high security lock is pick and
acid resistant and easily changeable. As a
further check for security, the key is only
removable in the locked position, thereby
assuring that the safe is locked when the key
is removed.

MASSIVE BOLTS:

This massive boltwork system is
designed to offer maximum protection
against physical attack.

RANDOMLY LOCATED RELOCKERS:

For additional security locations of the
relocker bolts are randomly positioned dur-
ing production.

STAINLESS STEEL CABLE:

The use of aircraft grade stainless steel
cables connecting the glass plates to the
relocking system assures reliability.

COMBINATION LOCK:

This Underwriters Laboratories approved
group one lock is manipulation proof with
one million possible combinations. It is
manufactured by Sargent and Greenleaf in
Nicholasville, Kentucky.

GLASS RELOCKER PLATES:

Located between the door and the lock-
ing mechanism, this glass plate is designed
to shatter during torch or tool attacks
thereby activating the relocking system.

FOUR-WAY SLIDING BOLTWORK:

The massive four-way boltwork mecha-
nism being used is designed to offer maxi-
mum protection against torching, drilling,
and explosives.

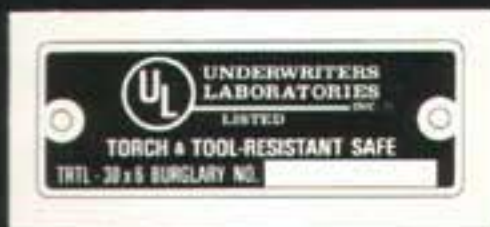
THERMAL RELOCKERS:

In the event of a torch attack, this device
is designed to activate the relocking system.

INSURANCE CERTIFICATION

In response to the requirements of the insurance industry, the Atlas jewelers safe was submitted to Underwriters Laboratories for approval. During extremely severe testing procedures, the safe demonstrated its ability to withstand virtually every tool and technique used by today's sophisticated burglars. Among the tools used were heavy duty torches, drills, jackhammers, and disc cutters. On January 8, 1986, the safe was awarded the TRTL-30X6 label.

In addition to the Underwriters Laboratories certification, Atlas has gone one step further by adding features not required by Underwriters Laboratories. Among them are extra relocking devices and fire protection.



| SIZE | EXTERNAL | | | INTERNAL | | | CUBIC FEET CAPACITY |
|------|---------------------------------|---------------------------------|---------------------------------|---------------------------------|---------------------------------|--------------------------------|---------------------|
| | HIGH | WIDE | DEEP | HIGH | WIDE | DEEP | |
| 3520 | 50 ³ / ₁₆ | 31 | 33 ¹ / ₂ | 35 ³ / ₁₆ | 20 | 20 | 8.2 |
| 4720 | 62 ¹ / ₄ | 31 | 33 ¹ / ₂ | 47 ¹ / ₄ | 20 | 20 | 10.9 |
| 5920 | 74 | 31 | 33 ¹ / ₂ | 59 | 20 | 20 | 13.6 |
| 7027 | 80 ³ / ₁₆ | 37 ³ / ₁₆ | 33 ¹ / ₂ | 69 ¹ / ₄ | 26 ³ / ₁₆ | 20 | 21.4 |
| 7036 | 80 ³ / ₁₆ | 47 ³ / ₁₆ | 38 ³ / ₁₆ | 69 ¹ / ₄ | 36 ³ / ₁₆ | 25 ¹ / ₄ | 36.8 |