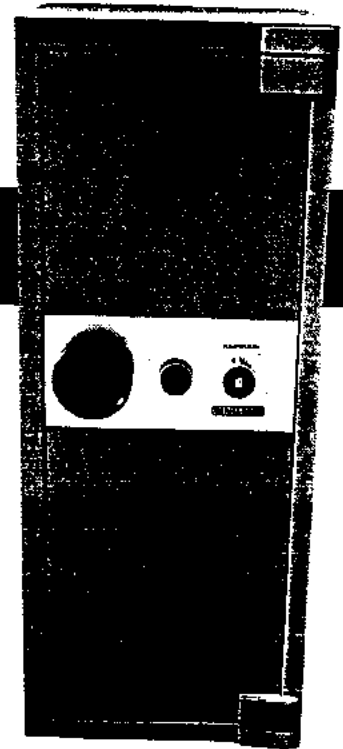
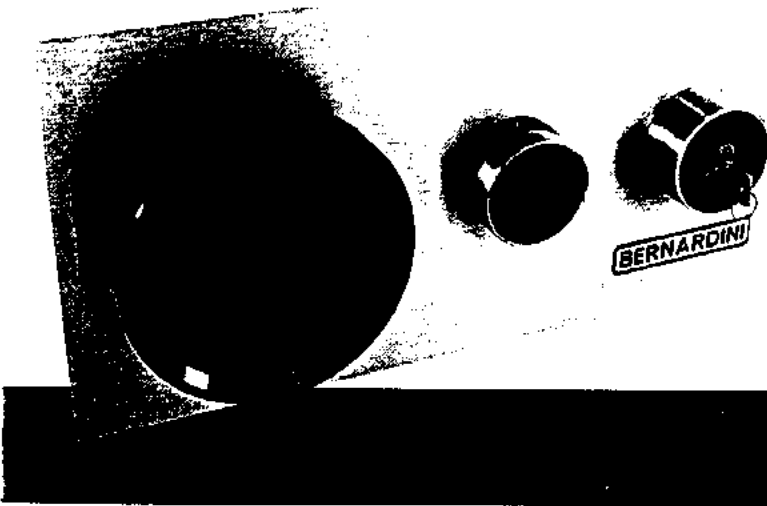


An impressive control panel enhances both JEWELVAULT and GEMVAULT including bolt-throwing handwheel, combination lock and keylock with anti-fiberoptic keyhole cover lock.



JEWELVAULT UL TL 30 and GEMVAULT UL TRTL 30x6 which are the outcome of 75 years patient research, development and rigorous testing by Bernardini, one of the world's major safe and vault manufacturers since 1912.

Special materials employed in the body and door of these two fine high-security safes resist the scientific methods of attack which criminals can be expected to use with increasing frequency over the remaining years of this century. New techniques give unrivalled overall strength against force of all kinds including the latest keyhole cover lock which prevents fiberoptic probe readings otherwise possible through safe keyholes.

JEWELVAULT UL TL 30



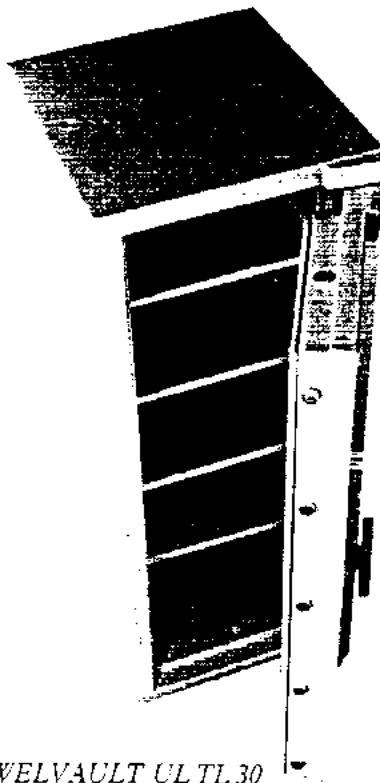
DOOR AND BODY

The JEWELVAULT combines exceptional six-sided composite strength and space-age protection devices with imposing elegance. The massive 4½" thick door and 3¼" thick body structure contain some of the most advanced high security protection materials ever developed. A cast matrix houses nuggets of exceptional hardness to combat all

known power tools, including both the limpet magnetic diamond-tipped core drill and the electric jack-hammer as well as other sophisticated attack weapons. Carbon fiber provides exceptional tensile strength and a good measure of protection against thermal cutting techniques.

LOCKWORK

The heart of the lock mechanism is protected by a revolutionary hardened steel encasement of ball bearings which is quite impenetrable to even the most vicious of all diamond or



*JEWELVAULT UL TL 30
Model 5920*

carbide-tipped drills. Additionally, a sensitive mechanism is mounted "live" to release a multiplicity of emergency relocking devices in the event of a major attack.

Locking is by Group 2 UL classified combination lock with private key change capability. In addition, the safe has a high-security keylock with keys provided in triplicate. The lock spindle incorporates drill and punch resistant features and the boltwork moves both horizontally and vertically deep into the protective body structure. Each polished steel bolt measures an exceptional 1¾" diameter. The door is removable to reduce the weight of the safe by one third for restricted elevator installations.

FIRE PROTECTION

An insulating material is incorporated into the construction of the JEWELVAULT ensuring a high degree of fire protection for the contents.

AN INVESTMENT IN TOMORROW'S PROTECTION TODAY.

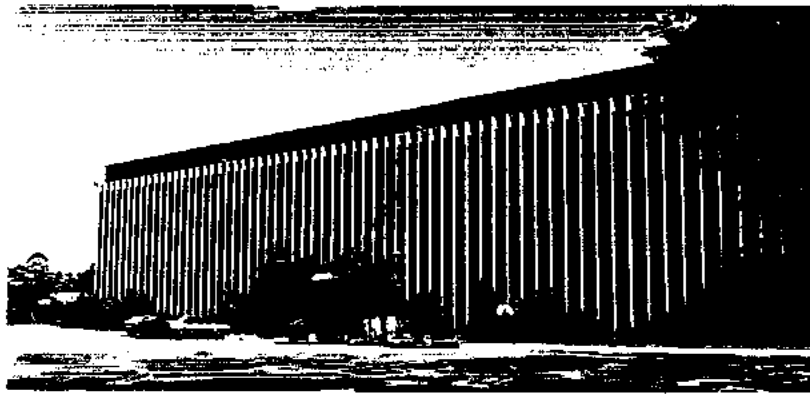
ANTI-FIBEROPTIC KEYHOLE COVER LOCK

Reportedly "the greatest technological advance in the safe cracking trade" has been the development of fiberoptics. Pioneered by the medical profession to cut back on the need for exploratory surgery, fiberoptics have been assimilated into the burglar's arsenal providing invaluable glimpses into the whereabouts and the workings of the locking mechanisms. The most vulnerable point of entry is through the keyhole. Bernardini provides an anti-fiberoptic keyhole cover lock which protects against this form of attack on both the GEMVAULT UL TRTL 30x6 and the JEWELVAULT UL TL 30 safes. The insurance companies are constantly in the process of revising their rating standards and fiberoptics is expected to figure strongly in their requirements.



GEMVAULT UL TRTL 30x6
Model 5920

A view of the inside of a combination lock taken through a fiberoptic boroscope inserted through a safe door showing combination wheels easily aligned for opening.



The Bernardini factory, an advanced high-tech facility employing computers to link all facets of production.

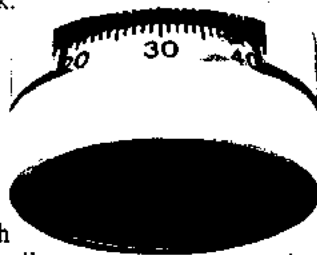
GEMVAULT UL TRTL 30x6



DOOR

The door is 8½" thick overall and is constructed from outer and inner steel plates continuously welded to form a single structure and enclosing a solid layer of alumina with corundum and copper behind a massive high density barrier incorporating carbon fiber and further anti-penetration inclusions. This remarkable door includes specially researched materials developed to resist all known forms of attack.

A round hand-wheel provides easy control of the bolt-work similar to that used on bank high-security vault doors. The four-way moving boltwork engages both vertically and horizontally into the protective casting of the body. The bolts are an impressive 2" in diameter.



LOCKWORK

This fine example of precision engineering is secured by a UL Group 1 manipulation-proof combination lock and a multi-lever keylock protected by an anti-

fiberoptic keyhole cover lock.

The heart of the entire lock mechanism is a floating glass plate "nerve center" from which multiple relocking devices are sensitized to trigger in the event of a determined attack. A hinged lockable door on the inside provides access to the lockcase area.

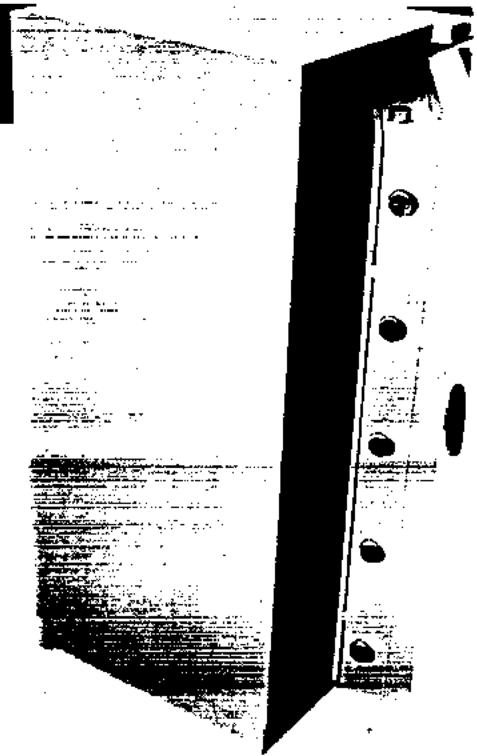
BODY

Bernardini produces uniquely within their own foundry a solid casting of alumina alloy which is impregnated with corundum inclusions to withstand intense oxyacetylene thermal cutting and impact-tools. A second high-density monolith surrounds the structure. This layer

incorporates a matrix of carbon fibers, copper and other hard inclusions, together with a massive steel grid. The total solid protective thickness of the body is 5". The door and the body of the safe are equal in strength. Together they form a complete six-sided cube of uniform strength.

FIRE PROTECTION

An insulating material is incorporated in the construction of the GEMVAULT ensuring a high degree of fire protection for the contents.



INTERIOR FITTINGS

A convenient arrangement of adjustable shelves is provided with each JEWELVAULT and GEMVAULT. The number of shelves provided is shown on the dimension chart. Lockable compartments are optional.

FINISH AND DESIGN

The JEWELVAULT and GEMVAULT are as impressive in appearance as they are in protective strength. The standard finish is a dignified gray-beige satin color with black and stainless steel accents.



JEWELVAULT UL TL 30

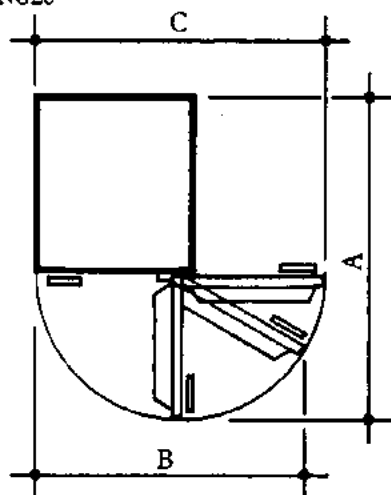
GEMVAULT UL TRTL 30x6

MODEL	INTERNAL/INCHES			EXTERNAL/INCHES			CAPACITY CU. FEET	WEIGHT POUNDS	SHELVES EACH	DOOR SWINGS		
	H	W	D	H	W	D*				A	B	C
JV3020	30	20	21	36½	26½	29	7.3	1480	2	53	44½	48
JV4520	45	20	21	51½	26½	29	10.9	1940	3	53	44½	48
JV5920	59	20	21	65½	26½	29	14.3	2400	4	53	44½	48
JV6826	68	26	21	74½	32½	29	21.5	2930	5	59	54	60
JV6836	68	36	26	74½	42½	34	36.8	3920	5	74	72	80
GV3520	35	20	21	50	31	34½	8.5	2900	2	62	47	55½
GV4720	47	20	21	62	31	34½	11.4	3900	3	62	47	55½
GV5920	59	20	21	74	31	34½	14.3	4180	4	62	47	55½
GV6826	68	26	21	78½	37	34½	21.5	5280	5	68½	57½	68½
GV6836	68	36	25	78½	47	38½	35.4	6820	5	84½	74½	88½

*ADD 2½" TO DEPTH FOR HANDLE & HINGES

JEWELVAULT UL TL 30

MODEL	CASH PURCHASE	LEASE PURCHASE 36 MOS.
JV 3020		
JV 4520		
JV 5920		
JV 6820		
JV 6836		



GEMVAULT UL TRTL 30x6

MODEL	CASH PURCHASE	LEASE PURCHASE 36 MOS.
GV 3520		
GV 4720		
GV 5920		
GV 6826		
GV 6836		

EMPIRE SAFE COMPANY

(212) 226-2255

433 CANAL STREET/NEW YORK, N.Y. 10013/FAX: (212) 941-9073
 DIAMOND/JEWELRY SAFES, COMMERCIAL MONEY SAFES, CASH DEPOSIT SAFES,
 COMPUTER DATA SAFES, RECORD SAFES, INSULATED FILES, BANK EQUIPMENT,
 SAFE DEPOSIT BOXES, VAULT DOORS, PREFABRICATED VAULT ROOMS, HOME SAFES