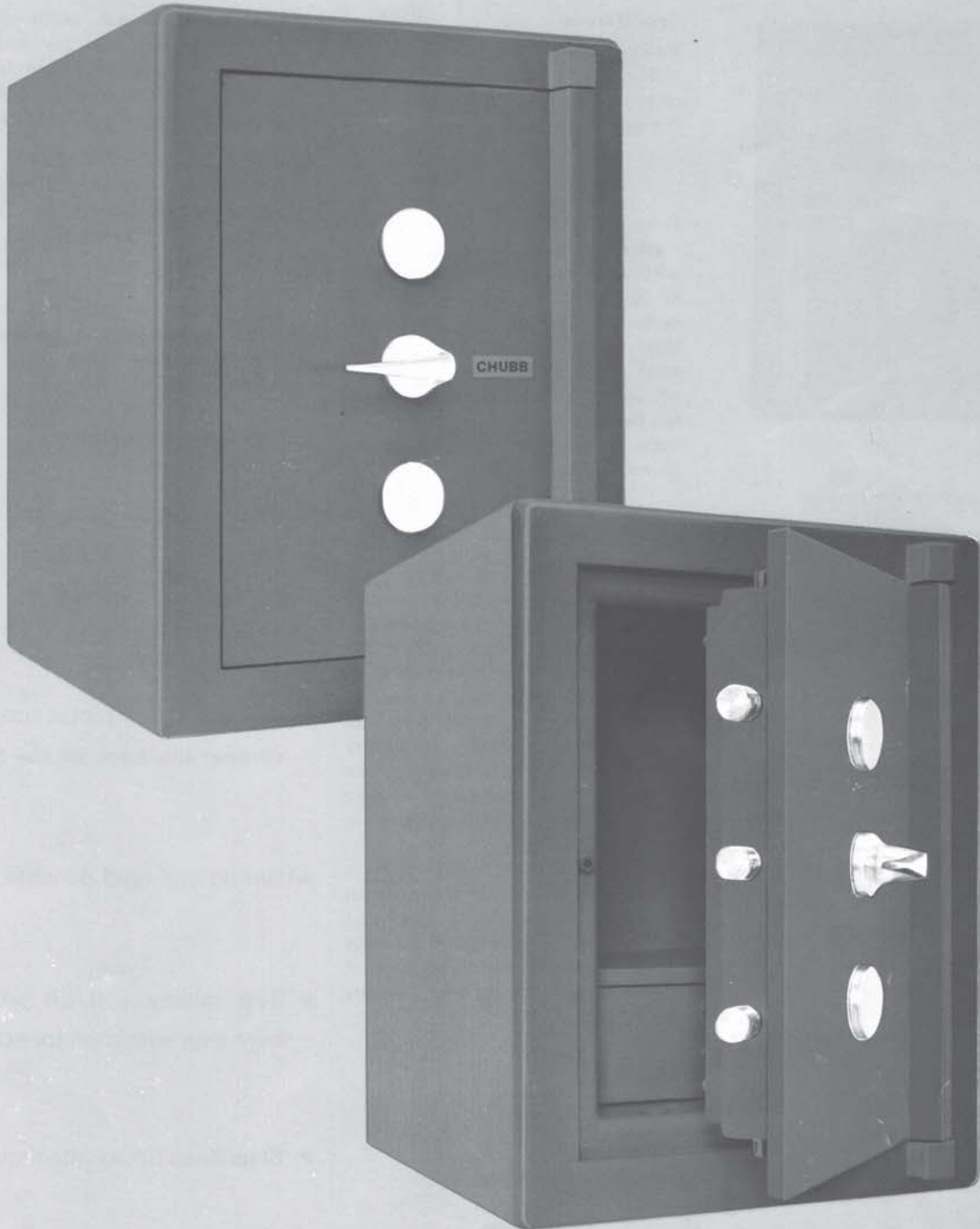


# CHUBB

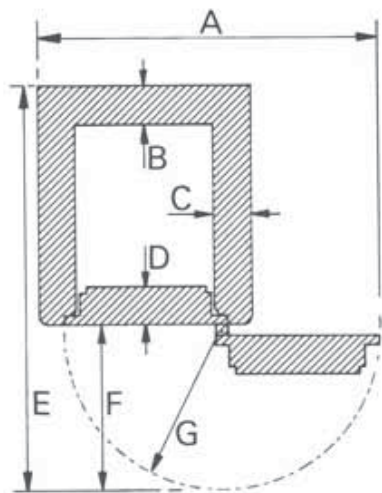


## Leamington Safe

Chubb & Son's Lock and Safe Co., Ltd.  
14-22 Tottenham Street,  
Tottenham Court Road,  
London W1P 0AA, England.

The Leamington Safe is designed to give a high degree of protection against fire and burglary and is ideal for shopkeepers, branches of chain stores, small businesses and private houses.

# Leamington Safe



A	30"	.762M
B	3½"	.089M
C	3½"	.089M
D	3½"	.092M
E	35½"	.902M
F	14½"	.368M
G	13½"	.349M

## Specification

**Body.** Overall thickness of 3½" (89mm) with outer and inner plates of tough steel and a filling of solid fire resisting material.

**Door.** The steel doorplate is reinforced to form a rigid door section with an overall thickness of 3½" (92mm). The lock and vital parts are protected by a further layer of toughened drill resisting steel giving a total metal thickness of ½" (18mm). A steel pan of fire resisting material is fixed to the back of the door to complete the all-round fire protection.

**Locking.** The safe door is secured by five 1⅝" (29mm) moving bolts—3 at the front and one each at the top and bottom. A further 3 fixed bolts engage in the body of the safe at the hinge side. These bolts are controlled by a Chubb best quality 7-lever keylock. A second keylock can be fitted if required, or a three code keyless combination lock in lieu of the keylock.

A vital feature is the special relocking mechanism synchronised with the lock which keeps the bolts in the closed position if an attempt is made to dislodge the lock by explosives.

## Finish

Exterior Dark grey hammer  
Interior Dark grey satin

## Dimensions

Outside			Inside			
Height	Width	Depth	Height	Width	Depth	Weight
25"	19"	23¼"	18"	12"	13⅜"	6¼cwt
.635M	.483M	.603M	.457M	.305M	.351M	343kg

"Chubb policy is one of constant improvement. We therefore reserve the right to alter any part of the specification above without incurring any obligation".

**Fittings.** One full width drawer at the bottom can be fitted if required. The inside height is 3⅞" (98mm) and the overall height of the drawer fitment is 5" (127mm).

**Anchoring.** Provision is made for anchoring devices to suit either wooden or concrete floors as an optional extra.

Note: Maximum projection of bolt throwing handle and hinges 2¼" (70mm) from front face.

## Special features:—

- ★ Emergency relocking device to secure the bolts if explosives are used on the lock.
- ★ All round fire protection, including the back of the door.
- ★ Strong and rigid construction.
- ★ Best quality CHUBB seven-lever lock with monitor action.
- ★ Steel base fitting attachments.