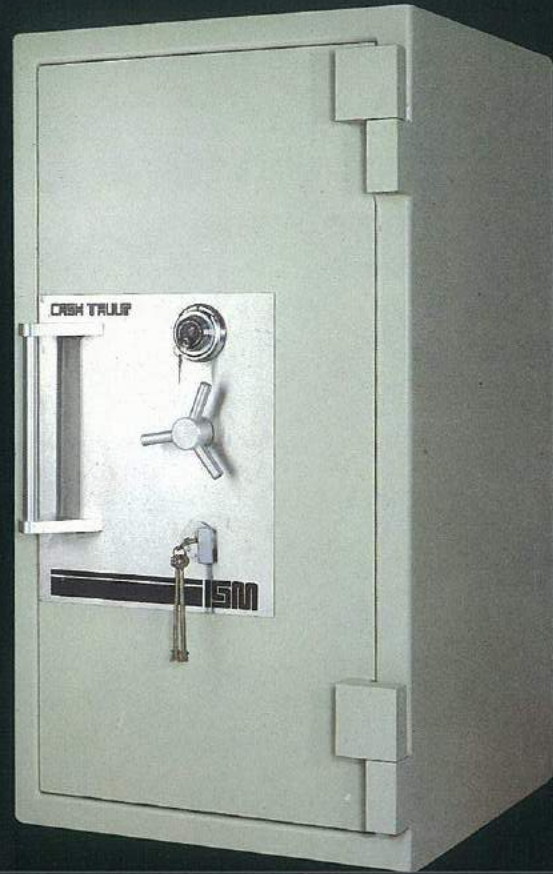


ISM

Cash Vault SL-2

U.L. TL-30

The ISM Cash Vault SL is a third generation TL-30 with features that have been added in order to give full six-sided protection against sophisticated burglary attacks. The SL safe has a unique locking mechanism design which is found in only much higher priced safes.



Door:

The overall thickness of the Cash Vault door is 150 mm (6"). The door's materials incorporate outer and inner 10 mm (0.4") thick steel plates continuously welded together that enclose a 30 mm (1.2") thick casting of C.N.A., ISM's superior torch and drill resistant composite material. The C.N.A. was developed by ISM to withstand all forms of attack by force, drills, and oxyacetylene cutters.

Body:

The Cash Vault SL body is 75 mm (3") thick overall. It incorporates outer and inner steel plates, that are continuously welded enclosing ISM's CS 650 monolith. The CS-650 monolith is a very high density mixture which is reinforced with a tough cage construction of heavy steel grids. In addition, the boltwork area is protected with drill resistant plates of high strength alloy steel. All this form a formidable barrier against tool, torch or drill attacks.

Locks:

The Cash Vault SL is equipped with a U.L. listed group 1 Manipulation Proof combination lock with a key locking dial. A second nine lever double-bit key lock is provided in conjunction with the combination lock (except for the 2621 model which has only the combination lock).

Boltwork:

The boltwork and locking mechanism were designed to give maximum protection against explosive attacks from all directions. The safe has a three way active boltwork plus an additional double action locking mechanism. Fixed bolts lock the hinge side of the door.

Relocking Devices:

The locks and vital mechanism areas are protected by a special glass plate which if tampered with releases a number of randomly located relockers independent of the lock. This provides the safe with a maximum security deterrent.

Interior Fittings:

Adjustable/removable shelves are available for setting up the safe interior to accept trays for jewelry, cash, and other valuables.

ISM Cash Vault SL – 2

Dimensions and Weights



SL2621



SL3521



SL4521



SL5521



SL6333



SL7233

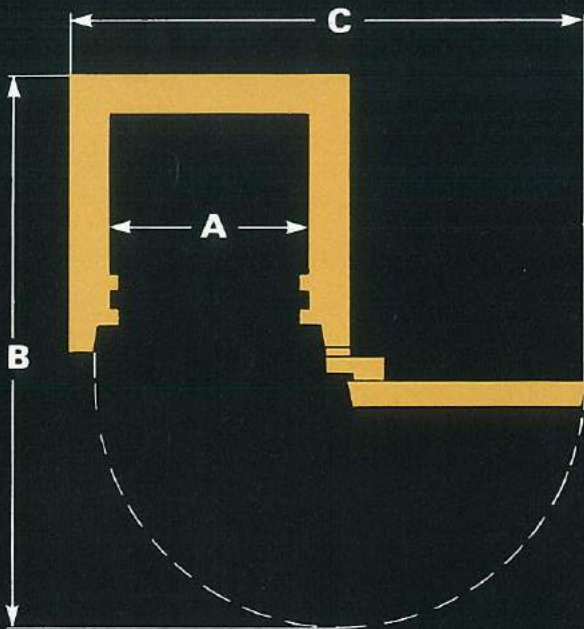
Model	Inside Dimensions (mm/in)			Outside Dimensions (mm/in)			Volume (Lt/Cu Ft)	Est. Weight*** (Kg/Lbs)
	Height	Width	Depth	Height	Width	Depth*		
SL2621	660	535	410	810	685	645	145	630
	26.0	21.1	16.1	31.9	27.0	25.4	5.11	1390
SL3521	890	535	460	1040	685	695	219	790
	35.0	21.1	18.1	40.9	27.0	27.3	7.74	1740
SL4521	1145	535	460	1295	685	695	282	950
	45.1	21.1	18.1	51.0	27.0	27.3	9.97	2090
SL5521	1400	535	460	1550	685	695	345	1110
	55.1	21.1	18.1	61.0	27.0	27.3	12.18	2440
SL6333	1600	840	460	1750	990**	695**	618	1530
	63.0	33.1	18.1	68.9	39.0	27.3	21.84	3370
SL7233	1830	840	660	1980	990**	895**	1015	1930
	72.0	33.1	26.0	77.9	39.0	35.2	35.86	4250

* Add 65mm. to outside depth for handle.

** (7233, 6333) Add 76 mm. to outside depth for hinges and 22 mm. to outside width for hinges.

*** (2621, 3521, 4521, 5521, 7233) Door weights 25% of total weight.
(6333) Door weights 28% of total weight.

Door Swing Projections



Door Swing Dimensions

Model	A	B	C
SL2621	535	1290	1280
	21.1	50.8	50.4
SL3521	535	1340	1280
	21.1	52.8	50.4
SL4521	535	1340	1280
	21.1	52.8	50.4
SL5521	535	1340	1280
	21.1	52.8	50.4
SL6333	840	1655	1550
	33.1	65.2	62.6
SL7233	840	1855	1625
	33.1	73.0	64.0

In line with our policy to provide the best in security, ISM reserves the right to incorporate any improvements and alter any specifications without prior notice.

ISM

EMPIRE

EMPIRE SAFE COMPANY, INC.

433 Canal St. • New York, NY 10013

(212) 226-2255

(Corner of Varick)