



# MEGASTORE

**JewelersX6  
TL-30x6  
six-sided  
protection  
+ fire  
protection**

# MEGASAFE JEWELERS TL-30x6

## SIX-SIDED PROTECTION

## + FIRE PROTECTION

Megasafe Industries is proud to introduce to you its new TL-30x6 high security safe. Designed, tested, and built by one of the most experienced teams of high security safe experts ever assembled. The same team that succeeded with the only U.L. approved TXTL-60 safe in the world. The Megasafe TL-30x6 is unsurpassed in its ability to withstand the most concentrated burglary attacks on door and body. Megasafe manufactures an additional variety of U.L. tested high security safes and vaults. With Megasafe Industries you enjoy a track record of manufacturing, supplying and servicing high security safes . . . since 1914.

### DOOR

The Jewelers TL-30x6 door is constructed of inner and outer electrically welded steel plates enclosing Megasafe's new superior barrier composite material CS-12000. In addition to the CS-12000 monolith, the entire door is covered by drill resistive "megasteel" antipenetration plates and our "Z" reinforcement bars. The entire door has overall thickness of 7.1" (180 mm). The combination of Megasafe's barrier materials provide the door a unique strength to protect against tool and torch attacks.

### BODY

The Jewelers TL-30x6 body is constructed of inner and outer electrically

welded steel plates including our "Z" reinforcement bars welded to the inner and outer body. The inner body is protected in addition with the "megasteel" antipenetration plates together with Megasafe's CS-12000 monolith and the reinforcement special alloy grid performs a 3.5" (90 mm) extra unique solid and strong body.



### LOCKS

The Jewelers TL-30x6 is equipped with an Underwriters Laboratories Group 1 manipulation proof combination lock with key locking dial, and a maximum security key changing key lock with removable bit. As an option a U.L. listed electronically activated push-button lock can be supplied to exchange combination or keylock.

### BOLTWORK AND RELOCKING MECHANISM

Megasafe's patented "solo" 3 way push and pull locking mechanism activates massive 1½" (38 mm) bolts. A continuous, reinforced interlock rail secures the door on the hinge side. The vital mechanism areas are protected by a glass plate. An attack by tool, torch or explosives will shatter the glass activating four relocking devices thus preventing the safe from

being opened. In addition, both locks are connected to two live relockers. A floating connection between the locks and the live relockers ensure that every time the safe is locked, the relocks will move into the locked position. For additional lock protection and control, every door is prepared to accept a time lock.

### FIRE RESISTANCY

The Megasafe Jewelers TL-30x6 safe was successfully fire and heat tested for two hours according to the most difficult standards.

### INTERIOR EQUIPMENT

Adjustable/removable shelves are standard, plus a variety of drawers, lockers, and interior compartments are available as optional extras.



### INSURANCE

The Megasafe Jewelers has passed the Underwriters Laboratories TL-30x6 test, and is so labelled. It thus qualifies for an "F" rating and is therefore recognized by all insurance companies.



Adjustable shelves  
(inside)

CS-12000 monolith  
in door & body

Convenient pull  
handle

Stainless facia  
panel

Massive 3 way  
active boltwork  
including  
two bolts up and  
two bolts down

Adjustable ball  
bearing hinges

Megasteel  
antipenetration  
plate covering door  
and body

Dual locking  
mechanism

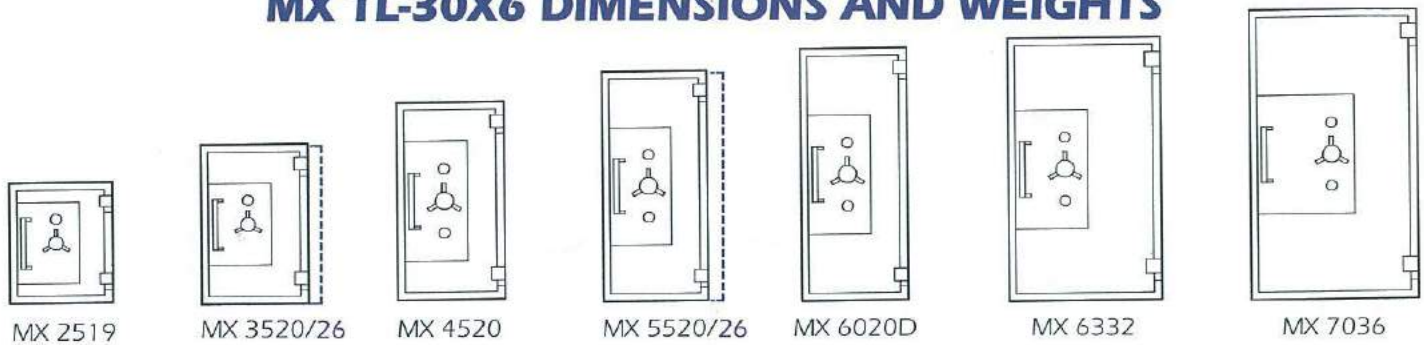
Push and Pull  
boltwork mechanism

Glass plate with 6  
relocking devices  
(inside)

JEWELERS X6

MEGASAFE

# MX TL-30X6 DIMENSIONS AND WEIGHTS



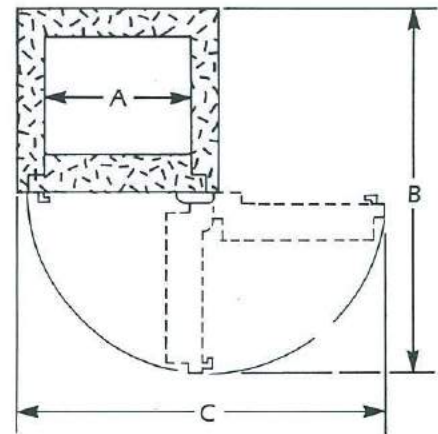
MODEL	INSIDE DIM.			OUTSIDE DIM.			CUBIC CAPACITY	DOOR WEIGHT	BODY WEIGHT	APPROX. TOTAL WEIGHT
	H	W	D	H	W	D*				
<b>MX 2519</b>	<b>25.0"</b> (0.635m)	<b>19.0"</b> (0.483m)	<b>16.0"</b> (0.406m)	<b>32.0"</b> (0.813m)	<b>26.0"</b> (0.660m)	<b>27.0"</b> (0.686m)	<b>4.5 cu. ft.</b> 7.776"	<b>370 lbs</b> (168kg)	<b>1190 lbs</b> (541kg)	<b>1560 lbs</b> (709kg)
<b>MX 3520</b>	<b>35.0"</b> (0.889m)	<b>20.0"</b> (0.508m)	<b>20.0"</b> (0.508m)	<b>42.0"</b> (1.067m)	<b>27.0"</b> (0.686m)	<b>31.5"</b> (0.800m)	<b>8.1 cu. ft.</b> 13.996"	<b>448 lbs</b> (203kg)	<b>1710 lbs</b> (777kg)	<b>2090 lbs</b> (950kg)
<b>MX 3526</b>	<b>35.0"</b> (0.889m)	<b>26.0"</b> (0.660m)	<b>18.0"</b> (0.457m)	<b>42.0"</b> (1.067m)	<b>33.0"</b> (0.838m)	<b>29.0"</b> (0.737m)	<b>9.5 cu. ft.</b> 16.380"	<b>537 lbs</b> (244kg)	<b>1710 lbs</b> (777kg)	<b>2247 lbs</b> (1.021kg)
<b>MX 4520</b>	<b>45.0"</b> (1.143m)	<b>20.0"</b> (0.508m)	<b>20.0"</b> (0.508m)	<b>52.0"</b> (1.320m)	<b>27.0"</b> (0.686m)	<b>31.5"</b> (0.800m)	<b>10.4 cu. ft.</b> 18.000"	<b>580 lbs</b> (263kg)	<b>2050 lbs</b> (932kg)	<b>2507 lbs</b> (1.195kg)
<b>MX 5520</b>	<b>55.0"</b> (1.397m)	<b>20.0"</b> (0.508m)	<b>20.0"</b> (0.508m)	<b>62.0"</b> (1.575m)	<b>27.0"</b> (0.686m)	<b>31.5"</b> (0.800m)	<b>12.75 cu. ft.</b> 22.032"	<b>669 lbs</b> (304kg)	<b>2350 lbs</b> (1.068kg)	<b>3019 lbs</b> (1.362kg)
<b>MX 5526</b>	<b>55.0"</b> (1.397m)	<b>26.0"</b> (0.660m)	<b>18.0"</b> (0.457m)	<b>62.0"</b> (1.575m)	<b>33.0"</b> (0.838m)	<b>29.0"</b> (0.737m)	<b>15.0 cu. ft.</b> 25.740"	<b>800 lbs</b> (363kg)	<b>2350 lbs</b> (1.068kg)	<b>3270 lbs</b> (1.486kg)
<b>MX 6020D</b>	<b>60.0"</b> (1.524m)	<b>20.0"</b> (0.508m)	<b>23.5"</b> (0.597m)	<b>67.0"</b> (1.702m)	<b>27.0"</b> (0.686m)	<b>34.5"</b> (0.876m)	<b>16.5 cu. ft.</b> 28.512"	<b>784 lbs</b> (356kg)	<b>2520 lbs</b> (1.145kg)	<b>3304 lbs</b> (1.501kg)
<b>MX 6333/18</b>	<b>63.0"</b> (1.600m)	<b>33.0"</b> (0.838m)	<b>18.0"</b> (0.457m)	<b>70.0"</b> (1.778m)	<b>40.0"</b> (1.016m)	<b>29.0"</b> (0.737m)	<b>22.0 cu. ft.</b> 38.016"	<b>1050 lbs</b> (477kg)	<b>2890 lbs</b> (1.313kg)	<b>3940 lbs</b> (1.790kg)
<b>MX 6333/20</b>	<b>63.0"</b> (1.600m)	<b>33.0"</b> (0.838m)	<b>20.0"</b> (0.508m)	<b>70.0"</b> (1.778m)	<b>40.0"</b> (1.016m)	<b>31.5"</b> (0.800m)	<b>24.0 cu. ft.</b> 41.472"	<b>1050 lbs</b> (477kg)	<b>3100 lbs</b> (1.409kg)	<b>4150 lbs</b> (1.886kg)
<b>MX 7036</b>	<b>70.0"</b> (1.778m)	<b>36.0"</b> (0.914m)	<b>26.0"</b> (0.660m)	<b>77.0"</b> (1.956m)	<b>43.0"</b> (1.092m)	<b>37.5"</b> (0.952m)	<b>38.0 cu. ft.</b> 65.664"	<b>1390 lbs</b> (632kg)	<b>4015 lbs</b> (1.825kg)	<b>5405 lbs</b> (2.457kg)

\*Add 2 1/2" (65mm) to outside depth for handle.

## DOOR SWING DIMENSIONS

MODEL	A	B	C
<b>MX 2519</b>	<b>19.0"</b> (0.483m)	<b>51.9"</b> (1.318m)	<b>48.2"</b> (1.225m)
<b>MX 3520</b>	<b>20.0"</b> (0.508m)	<b>54.7"</b> (1.390m)	<b>50.6"</b> (1.285m)
<b>MX 3526</b>	<b>26.0"</b> (0.660m)	<b>50.5"</b> (1.537m)	<b>62.3"</b> (1.580m)
<b>MX 4520</b>	<b>20.0"</b> (0.508m)	<b>54.7"</b> (1.390m)	<b>50.6"</b> (1.285m)
<b>MX 5520</b>	<b>20.0"</b> (0.508m)	<b>54.7"</b> (1.390m)	<b>50.6"</b> (1.285m)
<b>MX 5526</b>	<b>26.0"</b> (0.660m)	<b>60.5"</b> (1.537m)	<b>62.3"</b> (1.580m)
<b>MX 6020D</b>	<b>20.0"</b> (0.508m)	<b>60.5"</b> (1.537m)	<b>62.3"</b> (1.580m)
<b>MX 6333/18</b>	<b>33.0"</b> (0.838m)	<b>68.0"</b> (1.728m)	<b>76.6"</b> (1.690m)
<b>MX 6333/20</b>	<b>33.0"</b> (0.838m)	<b>70.0"</b> (1.778m)	<b>76.6"</b> (1.690m)
<b>MX 7036</b>	<b>36.0"</b> (0.914m)	<b>79.0"</b> (2.010m)	<b>82.0"</b> (2.085m)

## DOOR SWING PROJECTIONS



# MEGAFIRE

The manufacturer reserves the right to incorporate any improvements and alter any specifications without prior notice.