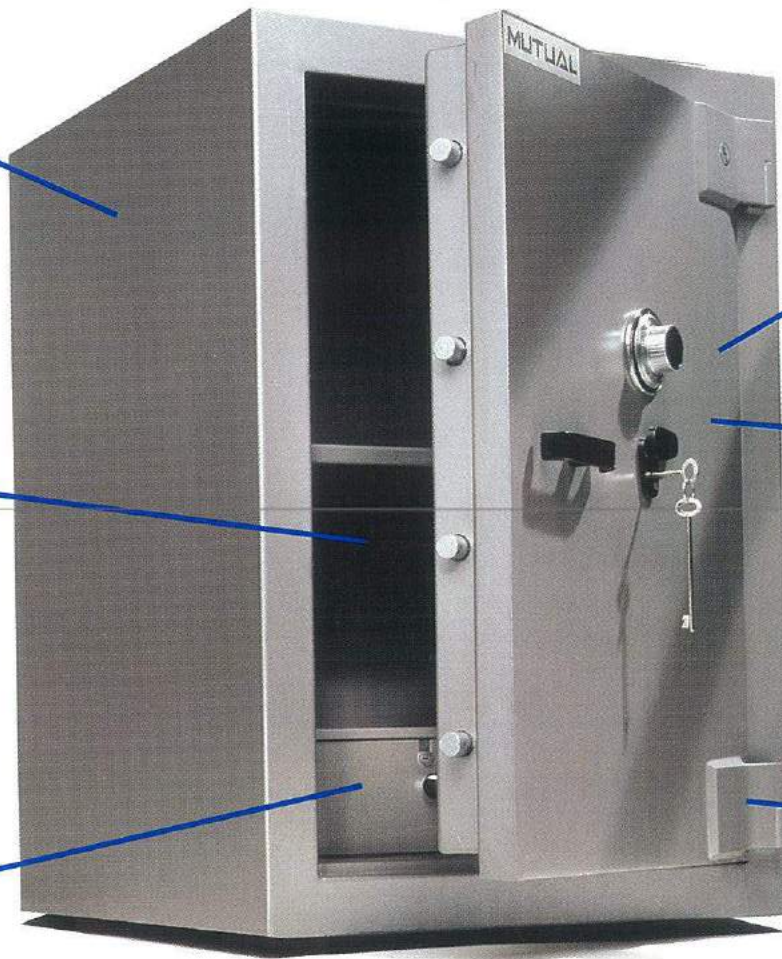


MUTUAL

Body: Double layer seimans steel filled with a 3" inner layer of tough 8000 PSI high density concrete embodied with corundum aggregate.

Bolts: Massive 1" locking bolts.

Interior: Totally adjustable shelves at 1/2" increments. Key locking drawer on intermediate models (optional on all models).



Lock: Dependable U.L. Group 2 combination locks protected by a tempered glass plate. The 7-lever key-lock provides additional security and daytime convenience.

Glass Relockers: Tempered glass plate triggers dual passive relockers in addition to a lock case relocker.

Hinges: Heavy duty, wrap around locks secured with independent fixed locking bolts.

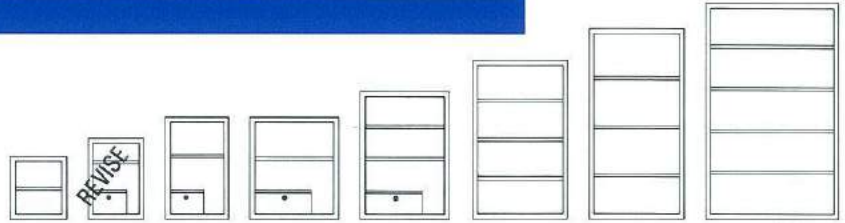
The Advanced Protector TL-15

Mutual proudly introduces another fine product in their line of quality safes. Incorporating advanced level security defense systems, this safe is an extension of Mutual's DP series. For those seeking a certified degree of security the Advanced Protector TL-15 offers a U.L. burglary label and a S.A.B.S. Group 1 one hour fire label.

MUTUAL

MODEL AP2/15

H	W	D
25	19¾	19¾
INTERIOR		
19	12¾	12



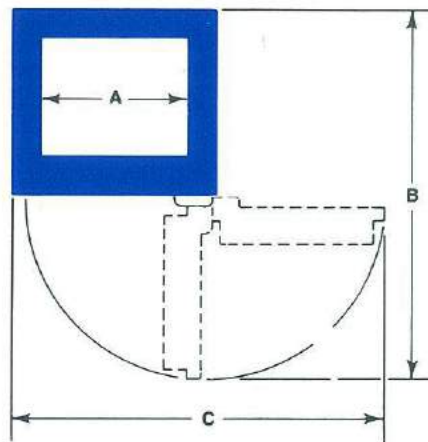
DIMENSIONS, WEIGHTS AND FEATURES

MODEL	EXTERIOR			INTERIOR			SHELVES/ DRAWERS	CAPACITY CU. FT.	WEIGHT (LBS)
	H	W	D	H	W	D			
AP1/15*	19½	17¾	17¾	13½	11½	11	1/0	1.0	430
AP2/15	25	17¾	17¾	19	11½	11	1/1 REVISE	1.3	REVISE 505
AP3/15	31½	19¾	19¾	24¼	12¾	12	1/1	2.1	755
AP4/15	31½	27½	27½	25¼	21½	20	1/1	6.3	1260
AP5/15	39½	27½	27½	32½	20½	21	2/1	8.1	1460
AP6/15	49	29½	29½	42	23	21	3/0	11.74	2040
AP7/15	59	29½	29½	52	23	21	3/0	14.53	2460
AP8/15	67	41½	28	60	34½	20	4/0	24.00	3240

*AP1 not available with keylock **Add 1½" to depth for handles and hinges



Lab tested at 1760°F
for one hour—S.A.B.S.
Group 1.



DOOR SWING PROJECTIONS

DOOR SWING DIMENSIONS

MODEL	A	B	C
AP1/15	11½	32¼	30½
AP2/15	REVISE 11½	32¼ REVISE	30½
AP3/15	12¾	35¼	33½
AP4/15	21½	51⅞	49¾
AP5/15	21½	51⅞	49¾
AP6/15	23	53½	51½
AP7/15	23	53½	51½
AP8/15	34½	65½	76½

