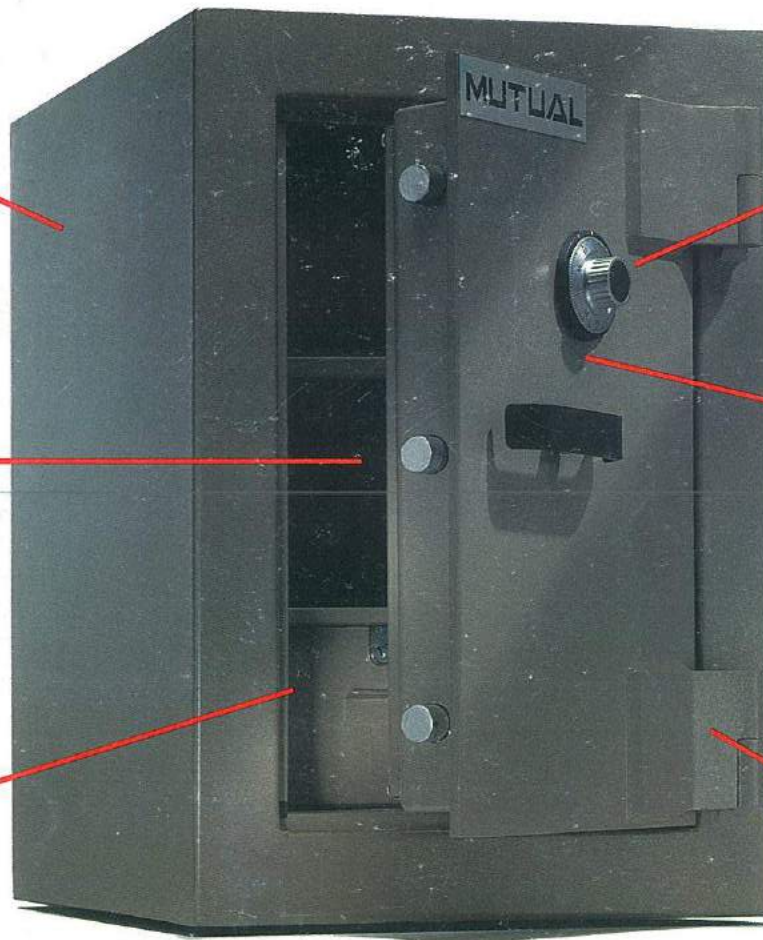


MUTUAL

Body: Double layer seimans steel filled with a 2" inner layer of tough 6000 PSI aggregate; special insulating layer on door ensures fire protection.

Lock: Dependable U.L. Group 2 combination locks protected by a 1/4" Rockwell C60 hard plate (DP5 also has a keylock).



Bolts: Massive 1" locking bolts.

Relockers: Independent relockers, one live and one passive, automatically trigger in the advent of an attack.

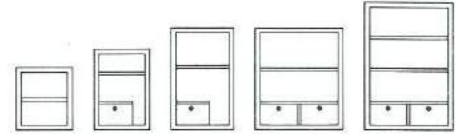
Interior: Special key locking drawer(s) and 1/2" increment adjustable shelf(s).

Hinges: Heavy duty, wrap around hinge locks secured with a full length steel rebate bar.

The Dual Protector

From the country where diamonds and security all began, Mutual proudly introduces the Dual Protector. Designed by security specialists to protect the priceless, this safe gives you everything you want and need in a safe—fire and burglary protection.

MUTUAL



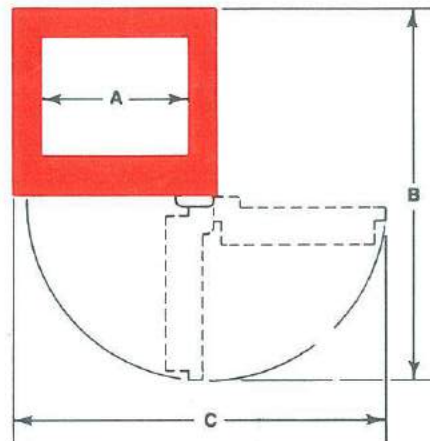
DIMENSIONS, WEIGHTS AND FEATURES

MODEL	EXTERIOR			INTERIOR			SHELVES/ DRAWERS	CAPACITY		WEIGHT (LBS)
	H	W	D	H	W	D		CU. IN.	CU. FT.	
DP1	19½	17½	17½	13½	11½	11½	1/0	1785	1.1	407
DP2	25	17½	17½	19	11½	11½	1/1	2513	1.3	495
✓ DP3	31½	19¾	19¾	25½	13½	14	1/1	4820	2.8	712
DP4	31½	27½	27½	26	21½	19	1/2	10621	6.3	1120
*DP5	39¼	27½	27½	33	21½	19	2/2	13480	8.1	1364

*DP5 equipped with a keylock in addition to combination lock.



Lab tested at 1562°F for
½ hour with the interior
temperature maintained
at 250°F



DOOR SWING PROJECTIONS

DOOR SWING DIMENSIONS

MODEL	A	B	C
DP1	11½	32¼	30⅞
DP2	11½	32¼	30⅞
DP3	13½	36¼	34¼
DP4	21½	51⅞	49¾
DP5	21½	51⅞	49¾