



SLS
SECURITY



Columbia Mk II (US UL TRTL 30×6)

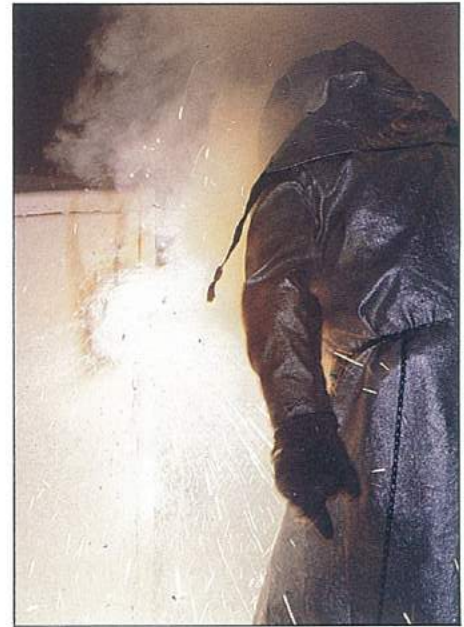
Columbia Mk II (US UL TRTL 30 x 6)

The updated Columbia Mk II Range maintains SLS criteria of maximum protection against all forms of attack, whilst retaining cost and weight advantages.

The design and specification takes fully into account advances made by test laboratories, at the same time projecting forward the high level of security that will be required into the 1990's.

The safe door presents the criminal with a 4.25" thick protective barrier incorporating SLS developed zirconium with special stainless steel superamics protecting vital primary and secondary locking areas. In addition to the door casting SLS maintain their two barrier philosophy with the inclusion of wire and zirconium. The overall door thickness is 7.25" .

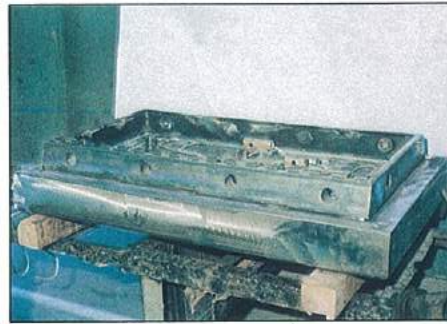
The safe body completes the six-sided construction, incorporating a sophisticated one-piece five-sided casting. Again high strength wire and zirconium complements the protection which has a minimum thickness of 4.25" . Additional resistance to drill attack through the safe body onto the primary lock is included.



UL Torch/Tool Attack on Safe Door Jamb.



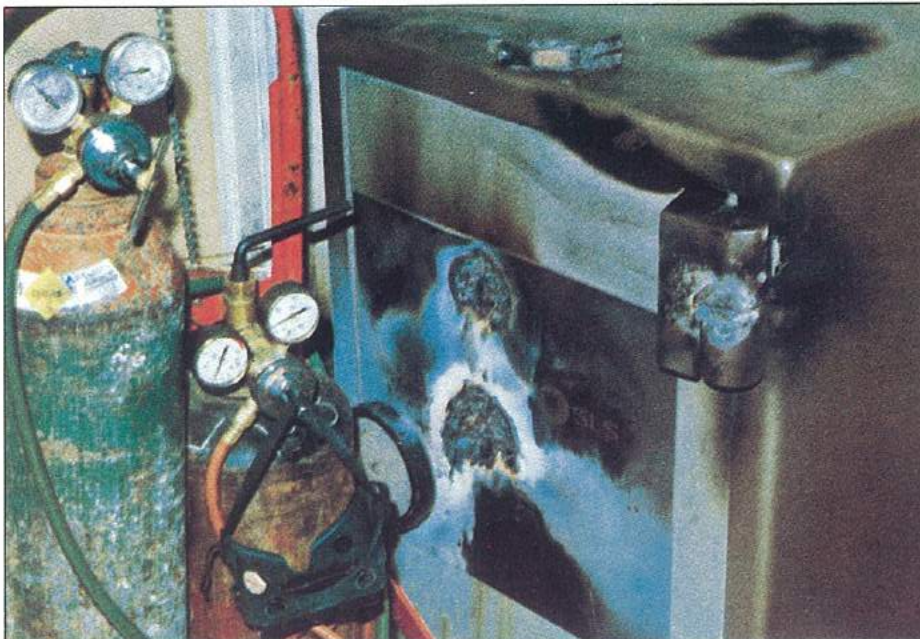
After the UL Attack - Success for SLS.



Safe Door Fabrication.



The Massive One-Piece Body Casting.



Another Criminal Failure on an SLS TRTL 30 x 6 Safe in the USA.



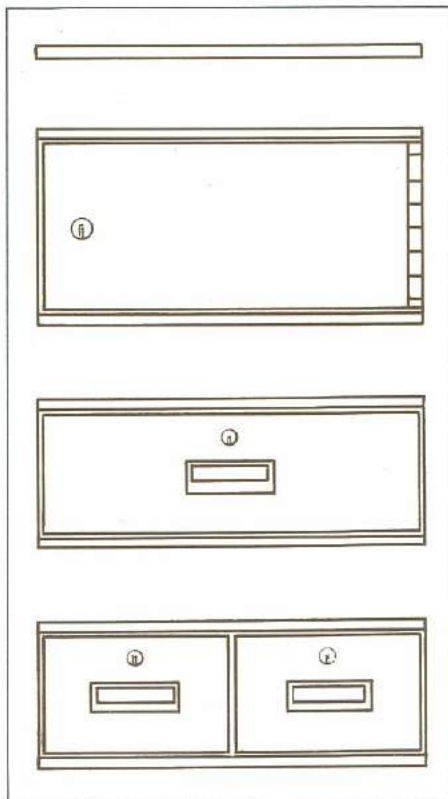
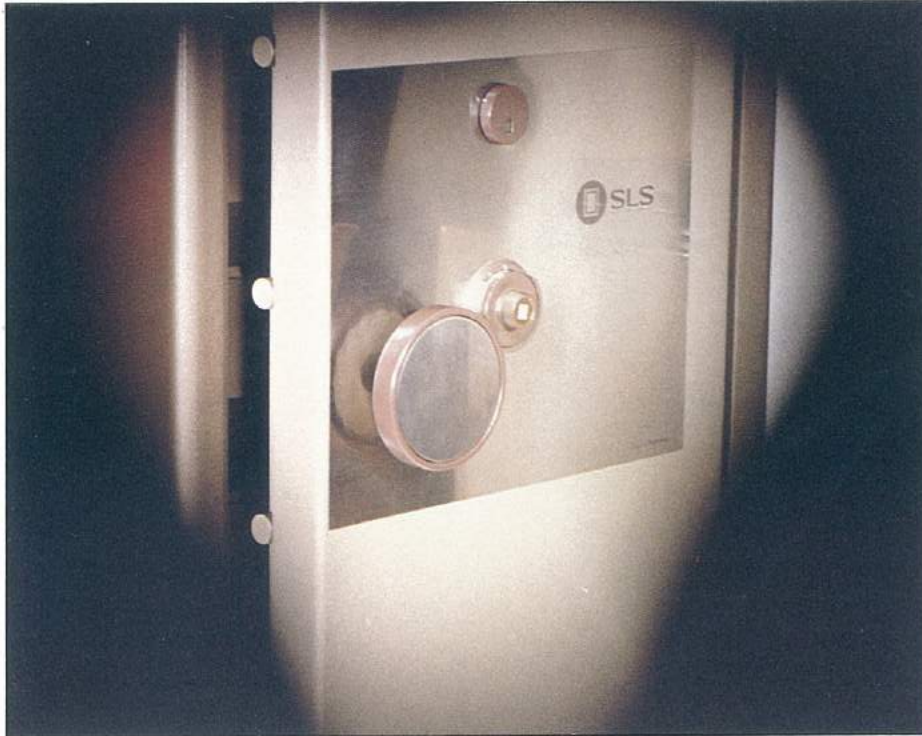
SLS Explosive Testing.

Dual locking is standard, incorporating a UL listed Group One manipulation proof combination lock, in conjunction with the unique and patented SLS Anti-Drill Keylock with detachable bits. Alternatively, two combination locks can be provided, as can provision for a timelock. (Not available size 2316.) As a pioneer in sophisticated relocking devices, the

Columbia Mk II incorporates two glass nerve centres connected by a random routing with protective tubing to the actual device which is additionally protected by special stainless steel superamics, so that neither the mechanism or the relocking bar can be attacked by drill. A live relocking device protects the boltwork each time the primary lock is locked.



▲ SLS is known for its massive boltwork system and this new range employs three-way moving boltwork with fixed bolts on the hinged side of the door. The bolts engage directly into the safe body, thus creating an integral unit when the safe is locked.

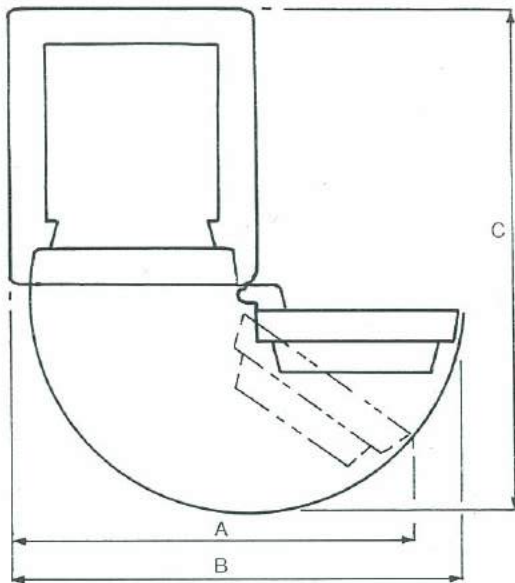


◀ A wide range of shelves, drawers, cupboards etc., can be provided at additional cost. Locking of cupboards can incorporate time delay mechanisms.



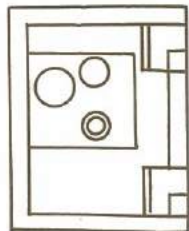
▶ The safe body is attractively painted in two shades of brown, with a centre facia panel across the middle of the door.



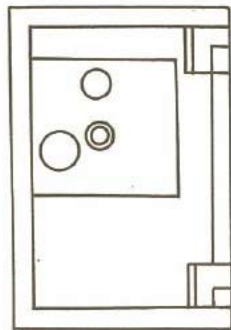


SIZE	A	B	C
dimensions in inches			
2316	35½	44¼	49¾
3520	43½	52¼	56¾
5020	43½	52¼	56¾
5020ED	43½	52¼	62¾
6325	53½	62¼	61¾
Mini Vault	64	81¾	79

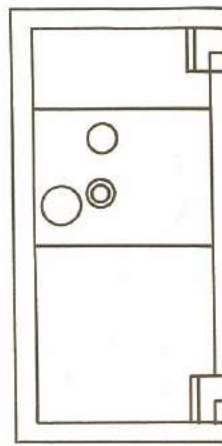
A = Minimum dimension for drawer withdrawal
 B = Overall width with door open at 180°
 C = Overall length with door open at 90°



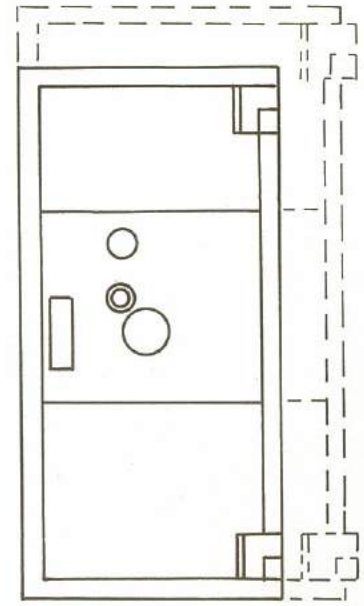
MODEL 2316



MODEL 3520



MODEL 5020 & 5020ED



MODEL 6325 + Mini Vault

MODEL	INTERNAL ins			EXTERNAL ins			CUBIC CAPACITY ft ³	WEIGHTS lbs
	H	W	D	H	W	D		
2316	23	16	16	31½	24½	27½	3.4	1750
3520	35	20	19	43½	28½	30½	7.7	2809
5020	50	20	19	58½	28½	30½	11	3720
5020ED	50	20	25	58½	28½	36½	14.5	4180
6325	63	25	19	71½	33½	30½	17.32	4950
Mini Vault	72	34	26	80½	42½	37½	36.83	7258

ADD 2⅝" FOR TOTAL DEPTH OVER HANDLE ON 2316-6325.
 ADD 3" FOR TOTAL DEPTH + 1¼" FOR TOTAL WIDTH OVER
 HINGE - MINI VAULT.

SLS reserve the right to alter the specification without notice in the
 interest of improving security.

All dimensions and weights are nominal.

As a matter of policy all heavy range safes are of similar external
 appearance and there is therefore no indication as to the likely value of
 the contents.