



VECTOR

**Jewelers
TL-30
six-sided
protection
+ fire
protection**

VECTOR JEWELERS TL-30

SIX-SIDED PROTECTION + FIRE PROTECTION

Megasafe Industries is proud to introduce high security safes by Vector Safe Company. Designed, tested, and built by one of the most experienced teams of high security safe experts ever assembled. The Vector Safe is unsurpassed in its ability to withstand the most concentrated burglary attacks. Vector Safes are available in two series: The Vector Diamond TRTL-30x6, and Vector Jewelers TL-30.

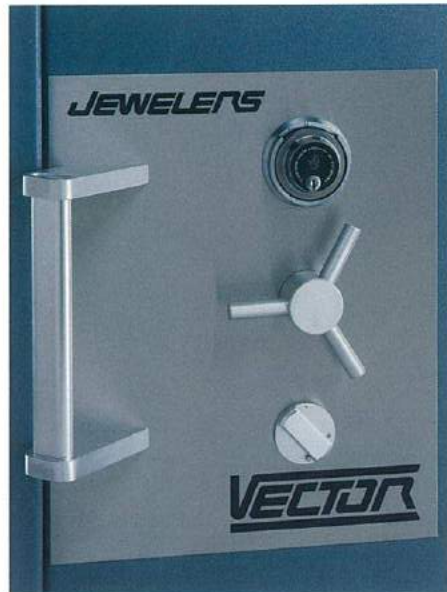
DOOR

The Jewelers TL-30 door is constructed of inner and outer electrically welded steel plates enclosing Vector's new superior barrier composite material, CS-900. In addition to the CS-900 monolith, the entire door is covered by drill resistive "megasteel" antipenetration plates. The entire door has overall thickness of 7.1" (180 mm).



BODY

The Jewelers TL-30 body is constructed of inner and outer electrically welded steel plates enclosing Vector's CS-900 monolith which is further reinforced by a special alloy grid. The overall thickness is 3.5" (90 mm).



LOCKS

The Jewelers TL-30 is equipped with an Underwriters Laboratories Group 1 manipulation proof combination lock with key locking dial, and a maximum security nine lever double bitted keylock with removable bit.

BOLTWORK AND RELOCKING MECHANISM

Vector's patented "solo" 3 way active locking mechanism activates massive 1 1/2" (38 mm) bolts. A continuous, reinforced interlock rail secures the door on the hinge side. The vital mechanism areas are protected by a glass plate. An attack will shatter the glass activating four relocking devices thus preventing the safe from being opened. In addition, both

locks are connected to two live relockers. A floating connection between the locks and the live relockers ensure that every time the safe is locked, the relocks will move into the locked position.

FIRE RESISTANCY

The Vector Jewelers TL-30 safe was successfully fire and heat tested for one hour according to the most difficult standards.

INTERIOR EQUIPMENT

Adjustable/removable shelves are standard, plus a variety of drawers, lockers, and interior compartments are available as optional extras.



INSURANCE

The Vector Jewelers has passed the Underwriters Laboratories TL-30 test, and is so labelled. It thus qualifies for an "F" rating and is therefore recognized by all insurance companies.



Adjustable shelves
(inside)

CS-900 monolith

Convenient pull
handle

Stainless facia
panel

Massive 3 way
active boltwork

Adjustable ball
bearing hinges

Megasteel plate
covering entire door

Dual locking
mechanism

Glass plate with 6
relocking devices
(inside)



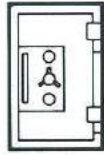
DIMENSIONS AND WEIGHTS



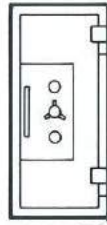
JS 1616



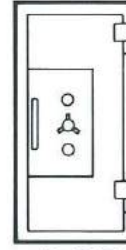
JS 2316



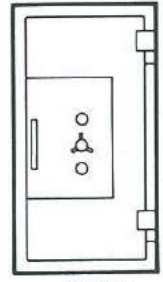
JS 3520



JS 5520



JS 6032



JS 7232

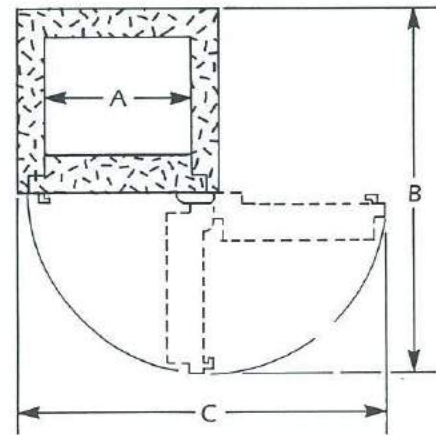
MODEL	INSIDE DIM.			OUTSIDE DIM.			CUBIC CAPACITY	DOOR WEIGHT	BODY WEIGHT	APPROX. TOTAL WEIGHT
	H	W	D	H	W	D*				
JS 1616	16.0" (0.407m)	16.0" (0.406m)	12.6" (0.319m)	23.0" (0.585m)	23.0" (0.585)	23.4" (0.594m)	3,236" 1.9 cu.ft.	210 lbs (95kg)	660 lbs (300kg)	870 lbs (395kg)
JS 2316	23.0" (0.585m)	16.0" (0.406m)	14.0" (0.355m)	30.0" (0.763m)	23.0" (0.584m)	24.8" (0.630m)	5,152" 3.0 cu.ft.	265 lbs (120kg)	835 lbs (380kg)	1100 lbs (500kg)
JS 3520	35.0" (0.890m)	20.0" (0.508m)	18.8" (0.477m)	42.0" (1.068m)	27.0" (0.686m)	29.6" (0.752m)	13,160" 7.6 cu.ft.	440 lbs (200kg)	1340 lbs (610kg)	1780 lbs (810kg)
JS 5520	55.0" (1.398m)	20.0" (0.508m)	18.8" (0.477m)	62.0" (1.576m)	27.0" (0.686m)	29.6" (0.752m)	20,880" 12.0 cu.ft.	630 lbs (285kg)	1870 lbs (850kg)	2500 lbs (1135kg)
JS 6032	60.0" (1.525m)	32.0" (0.813m)	18.8" (0.477m)	67.0" (1.703m)	39.0" (0.991m)	29.6" (0.752m)	36,696" 20.9 cu.ft.	980 lbs (445kg)	2485 lbs (1130kg)	3465 lbs (1575kg)
JS 7232	72.0" (1.829m)	32.0" (0.813m)	26.0" (0.660m)	79.0" (2.007m)	39.0" (0.991m)	36.8" (0.935m)	59,904" 34.7 cu.ft.	1145 lbs (520kg)	3080 lbs (1400kg)	4225 lbs (1920kg)

*Add 2½" (65mm) to outside depth for handle.

DOOR SWING DIMENSIONS

MODEL	A	B	C
JS 1616	16.0" (0.406m)	44.4" (1.128m)	42.6" (1.080m)
JS 2316	16.0" (0.406m)	45.8" (1.164m)	42.6" (1.080m)
JS 3520	20.0" (0.508m)	54.6" (1.388m)	50.6" (1.284m)
JS 5520	20.0" (0.508m)	54.6" (1.388m)	50.6" (1.284m)
JS 6032	32.0" (0.813m)	66.7" (1.693m)	74.6" (1.894m)
JS 7232	32.0" (0.813m)	73.9" (1.876m)	74.6" (1.894m)

DOOR SWING PROJECTIONS



Megasafe Industries reserves the right to incorporate any improvements and alter any specifications without prior notice.

Distributor: